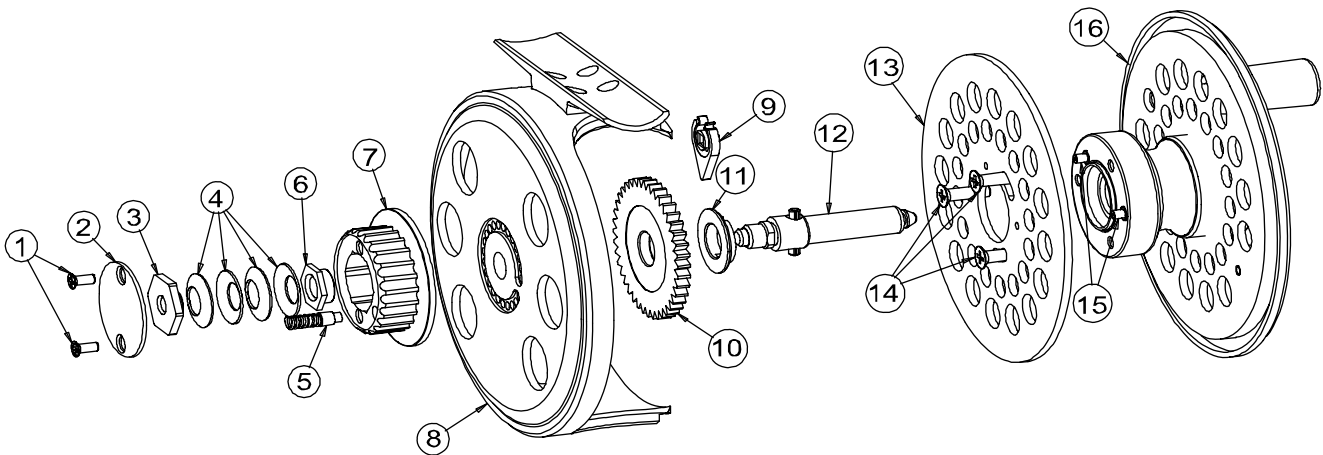


Adjusting the Drag Range on a Cimarron Reel

DRAG RANGE ADJUSTMENT PROCEDURE

Although the factory drag range is appropriate for most fishing situations, it may occasionally be necessary to adjust the drag range. A #1 Phillips screwdriver is needed to accomplish this adjustment.

1. Remove the two Drag Knob Cap Screws (1) securing the "RR" Drag Knob Cap (2) to the Drag Knob (7).
2. To raise the range, remove the Detent Plunger Assembly (5) and turn the Drag Knob (7) counterclockwise until the Drag Nut (3) is free. Lift the Drag Nut (3) out of the Drag Knob (7) and rotate it one flat (one side of the Drag Nut (3)) clockwise. Place the Drag Nut (3) into the Drag Knob (7) and rotate the Drag Knob (7) clockwise until the drag first engages. If with the tighter setting, the Detent Plunger Assembly (5) hole does not reach the 5-6 o'clock position, you must continue to rotate the Drag Knob (7) past the point of the drag's first engagement until the Detent Plunger Assembly (5) hole is at the 5-6 o'clock position before you reinsert the Detent Plunger Assembly (5).
3. To loosen the range, follow the same procedure, but instead of rotating the Drag Nut (3) clockwise after you have removed it from the Drag Knob (7), rotate it counter clockwise to achieve a lighter drag setting.



1	DRAG KNOB CAP SCREWS (2)	9	CLICKER (2 PIECE)
2	DRAG KNOB CAP	10	DRAG DISK
3	DRAG NUT	11	THRUST WASHER
4	BELLEVILLE SPRING WASHERS	12	SPINDLE ASSEMBLY
5	DETENT PLUNGER ASSEMBLY	13	SPOOL FLANGE
6	SPINDLE NUT	14	SPOOL FLANGE SCREWS
7	DRAG KNOB	15	ONE-WAY PLUNGERS (2)
8	FRAME	16	SPOOL FACE ASSEMBLY