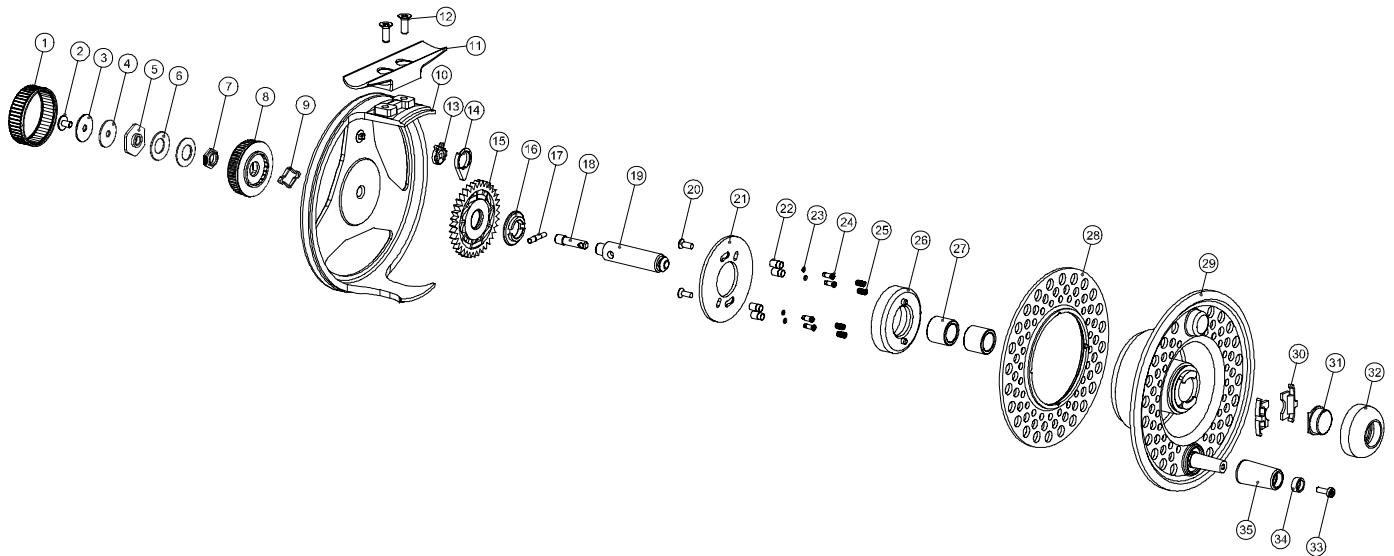


# Changing the Direction of the Retrieve on a Flywater LA Reel (2007 Model)

## CHANGING THE DIRECTION OF RETRIEVE

1. Remove the Spool Assembly (28 & 29) from the Frame (10).
2. Using a #1 Phillips screwdriver, remove the two Rotating Ring Screws (20) on the bottom side of the Spool Assembly (28 & 29) far enough to allow the Rotating Ring (21) to be repositioned over the other two One-Way Plungers (24).
3. Re-tighten the two Rotating Ring Screws (20) and replace the Spool Assembly (28 & 29) on the Frame (10).

**NOTE:** If the inside One-Way Plungers (24) are exposed, the reel is set for right hand retrieve; if the outer One-Way Plungers (24) are exposed, the reel is set for left hand retrieve. When changing the direction of the retrieve, the direction in which the backing and line are wound onto the Spool Assembly (28 & 29) must be reversed. When viewing the outer face of the Spool Assembly (28 & 29), the backing and line should be wound on in a clockwise direction for left hand retrieve and in a counterclockwise direction for right hand retrieve.



1	DRAG KNOB CAP	19	SPINDLE
2	DRAG KNOB SCREW	20	CHANGE RING SCREWS
3	DRAG KNOB WASHER	21	CHANGE RING
4	PLASTIC WASHER	22	PLUNGER HOUSING
5	DRAG NUT	23	O RING
6	DISC SPRING (BELLEVILLE)	24	ONE-WAY PLUNGER
7	SPINDLE NUT	25	ONE-WAY PLUNGER SPRING
8	DRAG KNOB	26	PLASTIC BLOCK
9	DRAG KNOB CLICKER	27	SPOOL BEARING
10	BODY	28	SPOOL REAR
11	FOOT	29	SPOOL
12	FOOT SCREWS	30	SPOOL RELEASE SLIDE
13	CLICKER SPRING	31	SPOOL RELEASE BUTTON
14	CLICKER PAWL	32	SPOOL RELEASE CAP
15	DRAG DISC	33	HANDLE RETAINING SCREWS
16	THRUST WASHER	34	RETAINER
17	CROSS PIN	35	HANDLE
18	DRAG SCREW		