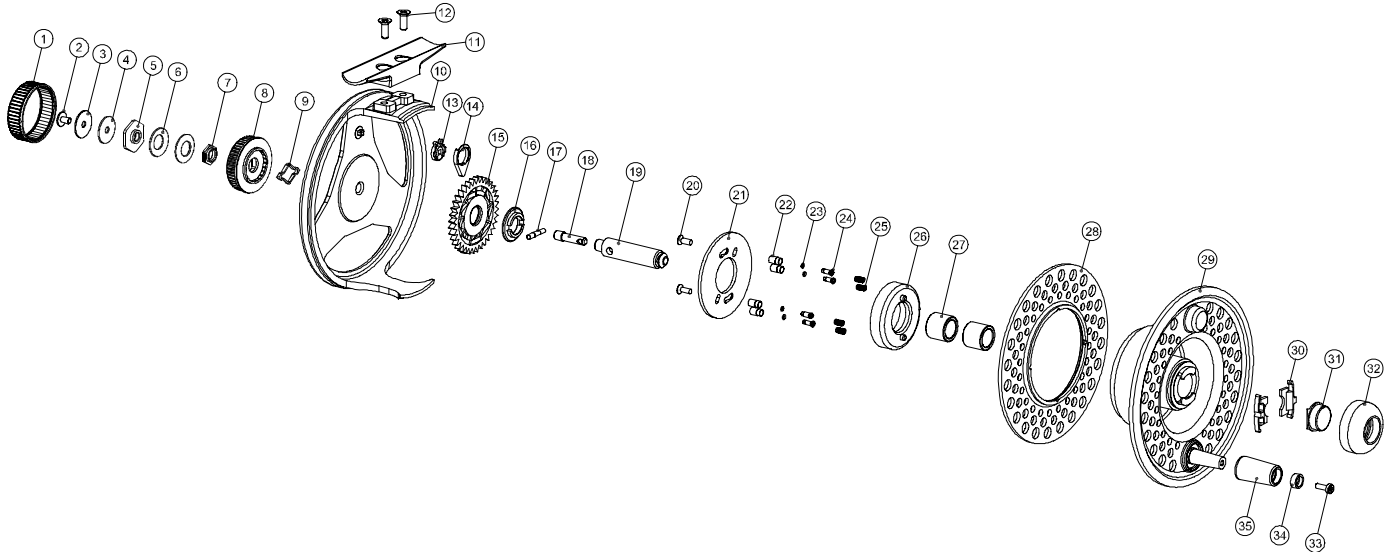


Cleaning Care for Your Flywater Reel (2007)

CLEANING INSTRUCTIONS FOR YOUR FLYWATER REEL (2007)

The Flywater series is fully coated, making it ideal for use in most fishing conditions.

When cleaning the reel, the drag should be fully disengaged – Drag Knob (8) rotated counterclockwise until the stopping position is reached. Use fresh water to flush debris from the drag system. For better cleaning results, separate the spool from the frame, soak in warm fresh water and then rinse in fresh running water. Complete dry the spool and the frame before storing the reel.



1	DRAG KNOB CAP	19	SPINDLE
2	DRAG KNOB SCREW	20	CHANGE RING SCREWS
3	DRAG KNOB WASHER	21	CHANGE RING
4	PLASTIC WASHER	22	PLUNGER HOUSING
5	DRAG NUT	23	O RING
6	DISC SPRING (BELLEVILLE)	24	ONE-WAY PLUNGER
7	SPINDLE NUT	25	ONE-WAY PLUNGER SPRING
8	DRAG KNOB	26	PLASTIC BLOCK
9	DRAG KNOB CLICKER	27	SPOOL BEARING
10	BODY	28	SPOOL REAR
11	FOOT	29	SPOOL
12	FOOT SCREWS	30	SPOOL RELEASE SLIDE
13	CLICKER SPRING	31	SPOOL RELEASE BUTTON
14	CLICKER PAWL	32	SPOOL RELEASE CAP
15	DRAG DISC	33	HANDLE RETAINING SCREWS
16	THRUST WASHER	34	RETAINER
17	CROSS PIN	35	HANDLE
18	DRAG SCREW		