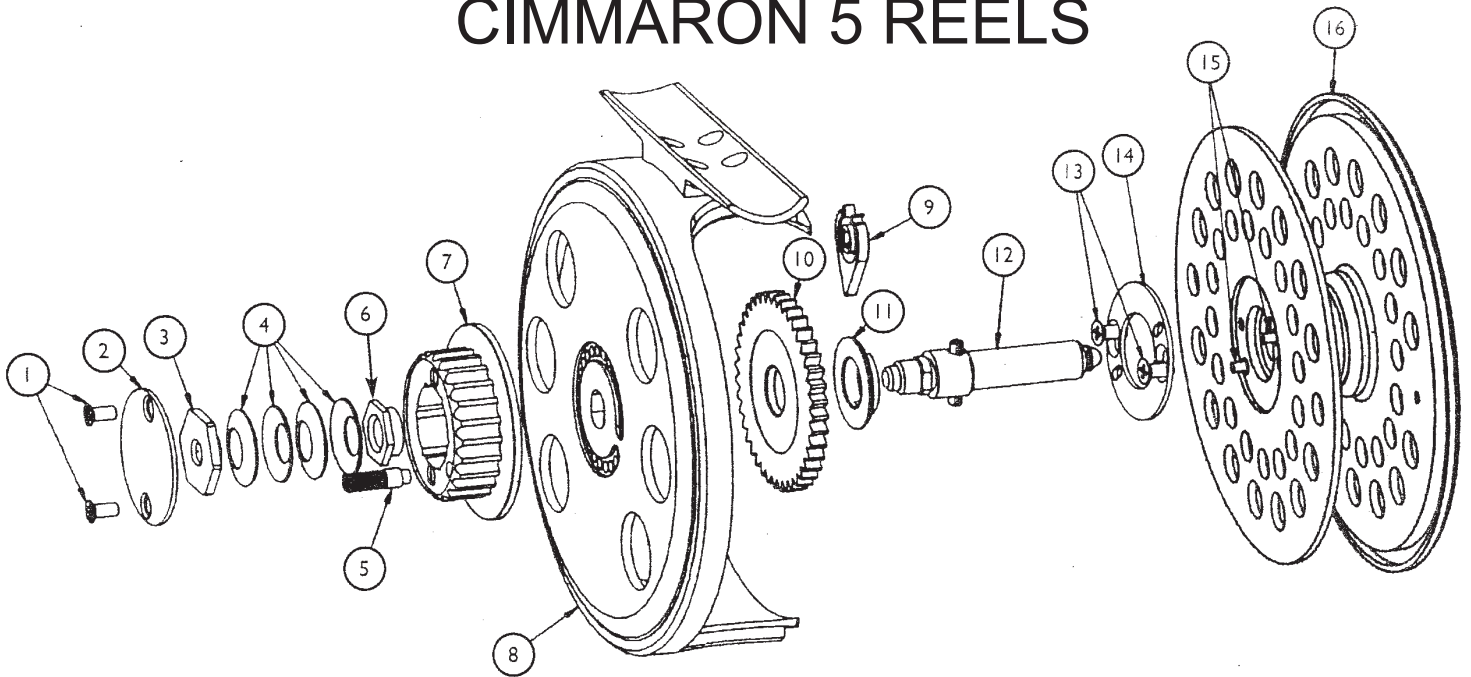


POST 98 CHANGE RING REELS

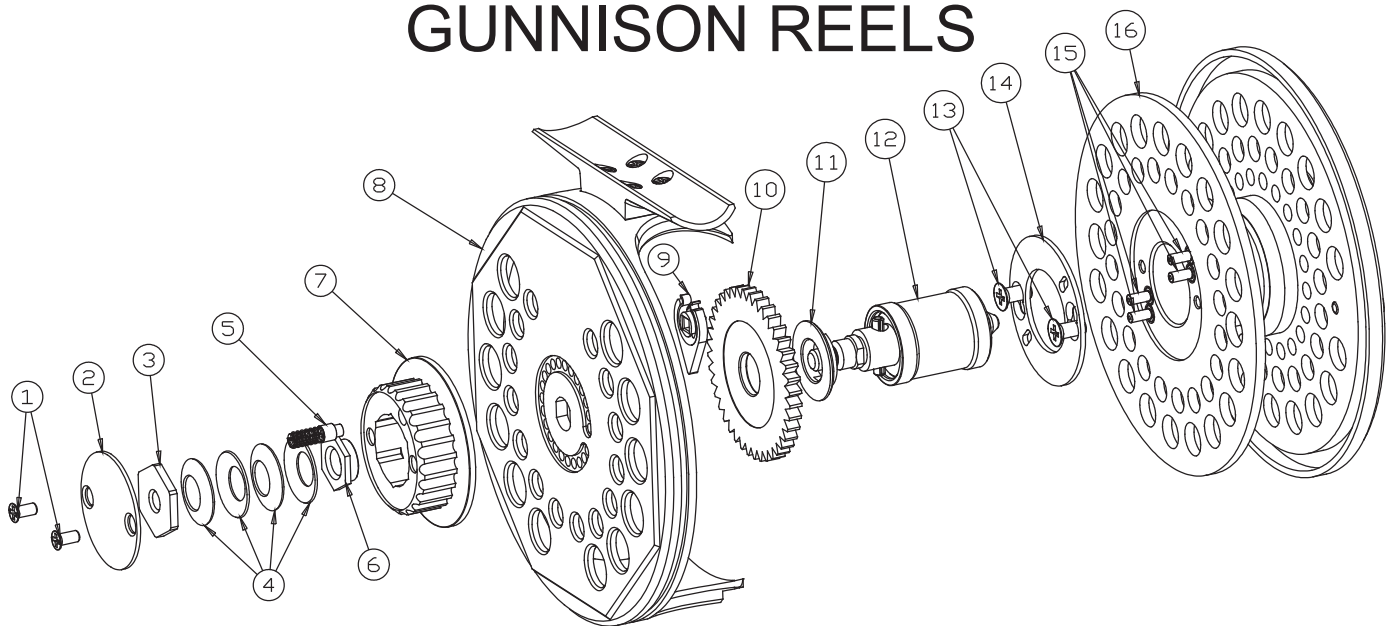
Changing the Direction of the Retrieve

1. Remove the Spool from the Frame
2. Using a #1 Phillips screwdriver loosen the two Change Ring Screws on the bottom of the Spool far enough to allow the Change Ring to be repositioned over the other One-Way Plunger(s)
3. Re-tighten the two Change Ring Screws and replace the spool on the Frame

CIMMARON 5 REELS



GUNNISON REELS



CANYON REELS

