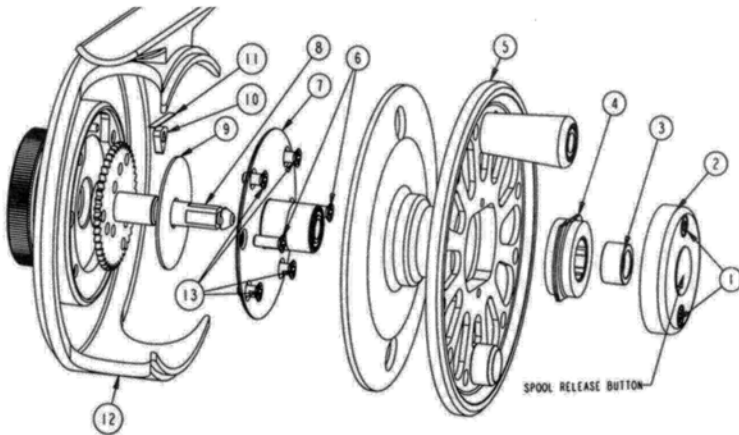


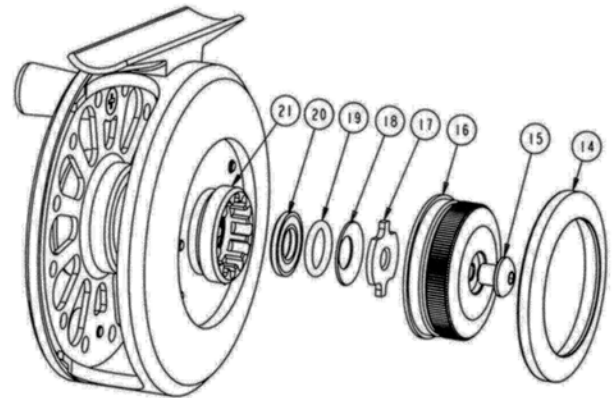
# SAN MIGUEL / VISION INSTRUCTION SHEET



**FIGURE A**

## LEGEND

- |                              |                               |
|------------------------------|-------------------------------|
| 1 Spool Cap Screws (Captive) | 8 Drag Spindle Assembly       |
| 2 Spool Cap Assembly         | 9 Drag Washer (Rulon)         |
| 3 One-Way Bushing            | 10 Clicker                    |
| 4 One-Way Clutch Assembly    | 11 Clicker Spring             |
| 5 Spool Assembly             | 12 Frame Assembly             |
| 6 Drag Knob Retainer Screws  | 13 Outer Spindle Cover Screws |
| 7 Outer Spindle Assembly     |                               |



**FIGURE B**

## LEGEND

- |                       |                      |
|-----------------------|----------------------|
| 14 Drag Knob Retainer | 18 Belleville Washer |
| 15 Drag Knob Screw    | 19 O-Ring            |
| 16 Drag Knob          | 20 Pressure Plate    |
| 17 Thrust Washer      | 21 Drag Knob Hub     |

### Left-Hand to Right-Hand Conversion and Drag Adjustment Procedures

The only tool necessary for these procedures is a high quality #1 Phillips screwdriver. The numbers referenced in the following instructions appear in Figures A and B.

#### Spool Removal

To remove the spool from the frame, press the Spool Release Button in the center of the spool cap (2).

#### Left-Hand / Right-Hand Conversion

To reverse the direction of retrieve:

- Remove the spool from the frame .
- Loosen the two captive Phillips Spool Cap Screws (1) .
- Remove the Spool Cap Assembly (2) from the Spool Assembly (5).
- Flip over the One-Way Clutch Assembly (4).

Note: The One-Way Clutch Assembly (4) is marked on the right-hand side. The side facing up is the retrieve direction.

To reassemble the Spool Assembly:

- Place the Spool Cap Assembly (2) into original position.
- Tighten the two captive Phillips Spool Cap Screws (1).

#### Drag Adjustment Procedure

To adjust the drag:

- Remove the spool from the frame thereby exposing the six Outer Spindle Assembly screws.

- Remove the two Drag Knob Retainer Screws (6) that are in the 3 o'clock & 9 o'clock position (refer to Figure A). Do not remove the four Outer Spindle Assembly Screws (13).
- After removing the two Drag Knob Retainer Screws (6), turn the Drag Knob (16) counter-clockwise until both the Drag Knob (16) and the Drag Knob Retainer Ring (14) come free from the frame.
- Tighten the drag by turning the Thrust Washer (17)(Refer to Figure B) clockwise or loosen it by turning the Thrust Washer (17) counter-clockwise.

Note: A light application of grease to the threads of the Drag Knob (16) and the mating threads of the Drag Knob Hub (21) will provide for the smoothest drag operation.

To reassemble the drag system:

- Fully thread (clockwise) the Drag Knob (16) onto the Frame Assembly and then back it off one turn.

Note: To verify that the Drag Knob (16) has properly threaded onto the Drag Knob Hub (21), make sure that the Drag Knob Retainer Ring (14) fits flush to the frame. If proper threading has not occurred, remove the Drag Knob (16) and then re-thread the Drag Knob (16) 1 full turn. Then tap the Drag Knob (16) on the palm of your hand and re-thread the Drag Knob (16) per instruction a.).

- Then install the Drag Knob Retaining Ring (14) into a position where the San Miguel label aligns with the foot of the frame.
- Replace the two Drag Knob Retainer Screws (6) to complete the operation.