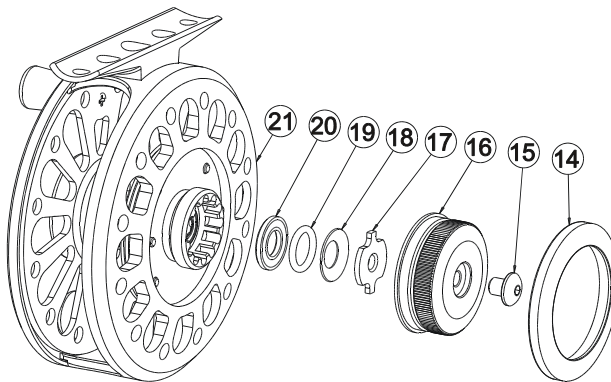


1. SPOOL CAP SCREWS (CAPTIVE)	8. DRAG SPINDLE ASSEMBLY
2. SPOOL CAP ASSEMBLY	9. DRAG WASHER (RULON)
3. ONE-WAY BUSHING	10. CLICKER
4. ONE-WAY CLUTCH ASSEMBLY	11. CLICKER SPRING
5. SPOOL ASSEMBLY	12. FRAME ASSEMBLY
6. DRAG KNOB RETAINER SCREWS	13. OUTER SPINDLE COVER SCREWS
7. OUTER SPINDLE ASSEMBLY	



14. DRAG KNOB RETAINER	18. BELLEVILLE WASHER
15. DRAG KNOB SCREW	19. O-RING
16. DRAG KNOB	20. PRESSURE PLATE
17. THRUST WASHER	21. DRAG KNOB HUB



VISION

**To Uphold Warranty, Completely
Read Product Information
Before Using Reel**

PLEASE READ BEFORE USING REEL TO UPHOLD WARRANTY

CLEANING

The Vision reel is fully anodized, making it ideal for use in both freshwater and saltwater. We recommend that you clean your reel after each use, especially after exposure to a salt or alkali environment.

When rinsing or soaking reel after use, the drag must be positioned at the lowest setting to allow the fresh water to flush salt and debris from the drag system. For best results, separate the spool from frame, soak both in warm fresh water and then rinse them in fresh running water. Allow the frame and spool to air dry separately before storage.

LEFT-HAND / RIGHT-HAND CONVERSION

1. Remove the spool from the frame.
2. Using a #1 Phillips screwdriver, loosen the two captive Phillips Spool Cap Screws (1).
3. Remove the Spool Cap Assembly (2) from the Spool Assembly (5).
4. Flip over the One-Way Clutch Assembly (4).

NOTE: The One-Way Clutch Assembly (4) is marked on the left-hand side. The side facing up is the retrieve direction.

5. Replace the Spool Cap Assembly (2) into the original position.

NOTE – When changing the direction of the retrieve, the direction in which the backing and line are wound onto the spool must be reversed. When viewing the outer face of the spool, the backing and line should be wound on in a clockwise direction for left hand retrieve and in a counterclockwise direction for right hand retrieve.

DRAG ADJUSTMENT PROCEDURE

To adjust the drag:

1. Remove the spool from the frame thereby exposing the six Outer Spindle Assembly screws.
2. Remove the two Drag Knob Retainer Screws (6) that are in the 3 o'clock and 9 o'clock position (refer to Figure A). Do not remove the four Outer Spindle Assembly Screws (13).
3. After removing the two Drag Knob Retainer Screws (6), turn the Drag Knob (16) counterclockwise until both the Drag Knob (16) and the Drag Knob Retainer Ring (14) comes free from the frame.
4. Tighten the drag by turning the Thrust Washer (17) clockwise or loosen it by turning the Thrust Washer (17) counterclockwise.

NOTE - A light application of petroleum grease to the threads of the Drag Knob (16) and the mating threads of the Drag Knob Hub (21) will provide for the smoothest drag operation. The Drag Knob Screw (15) should not be loosened for any reason. The outside surface of the One-Way Bushing (3) can be lubricated if needed. Do not use solvent or detergent on this reel as they can cause the lubricants to migrate into the drag system rendering it inoperable.

To reassemble the drag system:

- 1: Fully thread (clockwise) the Drag Knob (16) onto the Frame Assembly and then back it off one turn. **NOTE:** To verify that the Drag Knob (16) has properly threaded onto the Drag Knob Hub (21), make sure that the Drag Knob Retainer Ring (14) fits flush to the frame. If proper threading has not occurred, remove the Drag Knob (16) and then re-thread the Drag Knob (16) one full turn. Then tap the Drag Knob (16) on the palm of your hand and re-thread the Drag Knob (16) per instruction #1.

2. Then install the Drag Knob Retaining Ring (14) into a position where the Vision label aligns with the foot of the frame.
3. Replace the two Drag Knob Retainer Screws (6) to complete.

VISION SPECIFICATIONS

	1	2	3
Width (spool):	.70"	.70"	.70"
Diameter:	2.50"	3.00"	3.40"
Weight:	3.7 oz.	4.1 oz.	4.9 oz.
Line Weight:	1-4 Wt.	4-6 Wt.	5-7 Wt.
Capacity:	WF2+50	WF5+60	WF6+160

All capacity numbers are in yards. Line capacities are based on floating fly lines and 20# backing. Capacities will vary according to specific lengths and diameters of alternative line manufactures' products.

We welcome your calls or inquires.
If you have any questions or comments concerning the product you have purchased please call Ross @ (970) 249-1212,

Or visit our web site:

www.rossreels.com