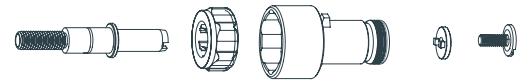


CHANGING THE DIRECTION OF RETRIEVE

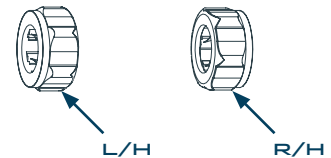
1. Turn the drag knob counterclockwise until it stops to fully loosen the drag.
2. Remove the spool by turning the spool release counterclockwise until the spool easily pulls away from the frame. Set the spool aside, and look at the spindle in the middle of the frame.
3. Use a wide flat-headed screwdriver (or small coin) to remove the screw at the center of the spindle by turning the screw counterclockwise until the screw fully disengages. Remove the screw and the lock washer. Please note, the lock washer may remain attached to the screw during removal, this is normal.
4. Pull the **red** spindle assembly cover off of the spindle. This will expose the **one-way clutch bearing**, which is silver, hexagonal in shape, and found at the base of the spindle.
5. Pull the bearing carefully off the spindle, flip it over, and then replace on the spindle with this new orientation. This will change the drag to Right Hand Retrieve (R/H).
6. Replace the spindle assembly cover, then carefully place the lock washer back atop the spindle, insuring that the two small lobes are placed in the corresponding slots at the top of the spindle. You may have to turn the washer with a finger until it seats in the slots.
7. Replace the screw and tighten by turning it clockwise. Place the spool back on the frame, being careful to line up the notches on the spindle with the corresponding lobes on the spool, and tighten the spool release by screwing it down in a clockwise direction.



EXPLODED VIEW OF DRAG:



ONE-WAY CLUTCH BEARING:



SPECIFICATIONS

All capacity numbers are in yards. Line capacities are based on floating fly lines and 20# backing. All numbers are conservative. Capacities will vary according to specific length and diameters of alternative line manufacturers' products. Capacities will be reduced by approximately 20% if using #30 backing instead of #20 backing.

SIZE	3 4	5 6	7 8
WIDTH	1.03"	1.11"	1.3"
DIAMETER	3.07"	3.39"	3.78"
WEIGHT	5.61oz	6.0oz	6.81oz
LINE WEIGHT	3-4wt.	5-6wt.	7-8wt.
CAPACITY	WF3+65	WF5+100	WF8+125

CLEANING

While your reel is safe to use in any type of water, regular cleaning and maintenance are required to ensure proper function throughout the life of the reel. To clean your reel, rotate the drag counterclockwise until it stops, and the drag is fully disengaged. Next remove the spool from the reel by turning the spool release counterclockwise until the spool easily pulls away from the frame.

NEVER USE SOLVENTS WHEN CLEANING YOUR REEL. Use fresh, clean water (distilled water if available) to rinse both the frame and the spool, flushing away any debris or dirt. Rotate the drag knob while rinsing to help loosen any debris that may be stuck inside the mechanism. Wipe with a clean dry cloth to remove any residue, and place both the reel and the spool face up (drag knob up, spool handle up) on a clean towel, and let air dry before reassembling.

NO LUBRICATION IS NECESSARY

REMINDER!!! Do not lubricate this reel. – the Ross Rapid™ has a self-lubricating drag system, and any addition of lubricant will void the warranty and cause a drag failure.